



產品目錄 Product Catalogue

納米混凝土防漏及養護產品
Nano Waterproofing and Preservation
Solution for Concrete

環保隔熱保溫塗料
Eco-Friendly Thermal Insulation Material



Tru-Seal International (HK) Limited
卓先國際(香港)有限公司



瀚一

Ocean Free Limited

防漏 Waterproofing

防潮防霉 Moisture-proofing, damp-proofing

抗白華/壁癌 Anti-efflorescence

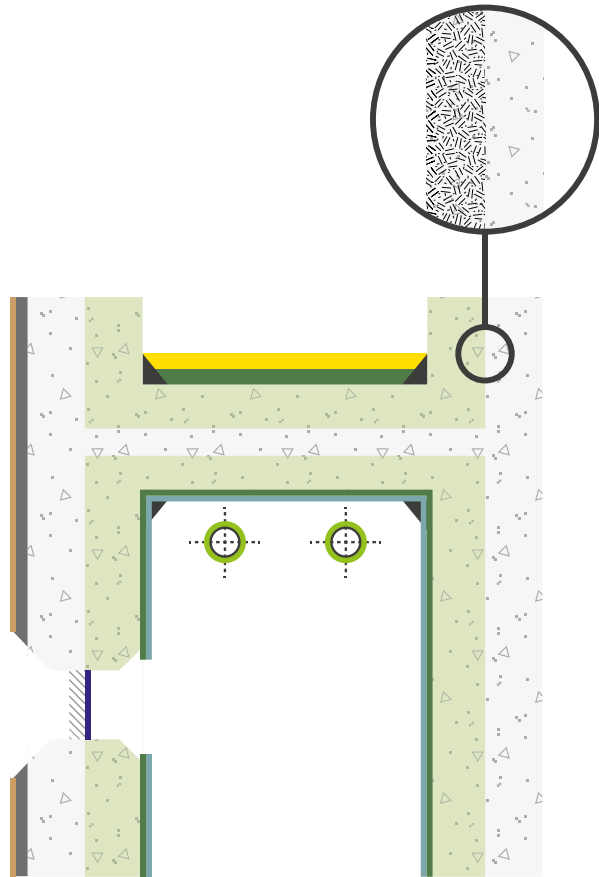
永久保護 Permanent protection

隔熱保溫 Thermal insulation

環保節能 Environmental protection and great energy saving

減碳抗暖 Carbon footprint reduction

讓每個建築成為理想的居所
Make every building an ideal place to live



混凝土
Concrete Slab

有效面積
Effective Area

聚氨酯/環氧樹脂
PU/Epoxy

有效面積放大圖
Zoom in effective area

水壓
Pressure from water

水滲出
Water leaking out

針咀
Grouting
Needle

灌漿機
Grouting
Machine

裂縫
Cracks

滲水問題 Water seepage problem

灌漿防漏方法 PU/Epoxy injection approach

卓先液
Tru-Sealer Solution

石寶液
Brick Sealer Solution

水性抗污隔熱防水漆
Water-based Anti-fouling
Waterproof Insulation Paint
CGF7600A

水泥系隔熱保溫塗料
Cementitious Based Thermal
Insulation Coating
for In/Outdoor Applications
CG100TIC

水性高效能保溫塗料
Water-based
High-Performance
Insulation Paint
EIC7670

水性無機保溫漆
Water-based Inorganic
Insulation Paint
ITP3100

高透光節能膜
High Transmittance Energy
Saving Films
IMT70

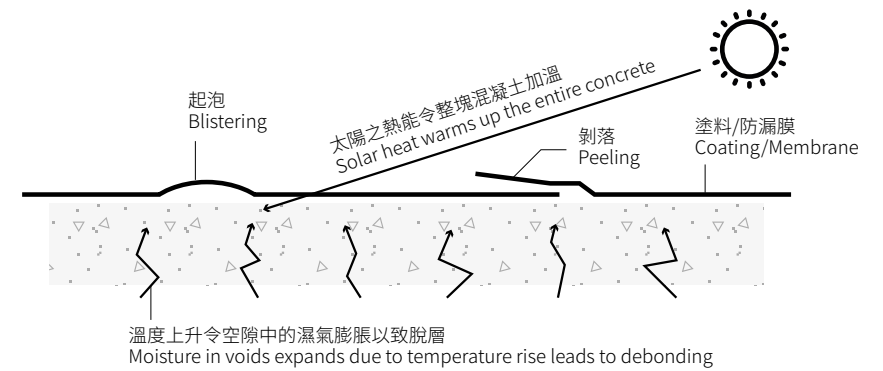
玻璃
Glass

石材
Masonry

冷水管/風管
Chiller Water Pipe/Air Duct

去角角隅
Corner Chamfers

結晶
Crystallization



塗料/防漏膜方法 Coatings/Membranes approach

卓先液 Tru-Sealer Solution

永久防水防潮的溶劑

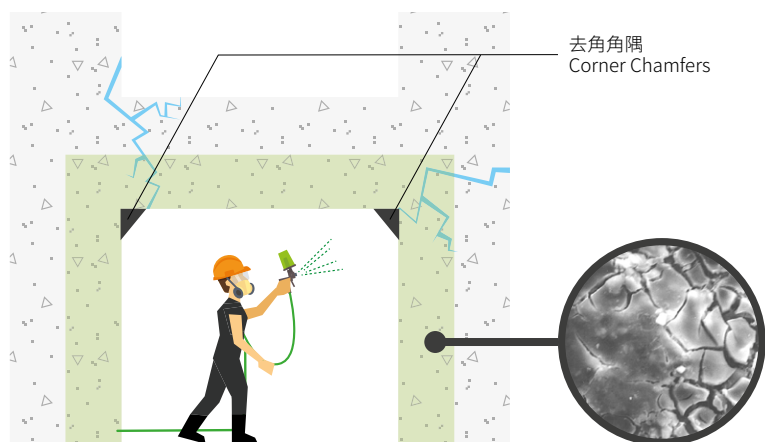
A Permanent Waterproofing and Damp-proofing Solution

卓先液是一種水性納米鹼活化溶液。當卓先液接觸混凝土表面時，溶液會即時與混凝土的鹼性離子產生化學反應，滲透至混凝土空隙中並於形成果凍狀(Aero-Gel)之不透水層，於21-28天後乾透並形成納米級固態晶體填補處理面之空隙。

Tru-Sealer Solution is a water-based alkali-activated solution. Once Tru-Sealer Solution contact with concrete surface, the solution reacts with alkali ions to form aero-gel barrier instantly, it dries within 21-28 days and turns into nano-scopic solid crystal that block off all voids on treated surface.

卓先液方法
Tru-Sealer Solution
approach

有效面積
Effective Area



- ✓ 可於負壓及正壓表面施工
Applicable on negative and positive pressure surface
- ✓ 增強混凝土與油漆、水泥層、磚之間連結性
Increases bonding strength with top coating, screed or bricks
- ✓ 深入滲透普通混凝土超過40毫米
Penetrates normal concrete by more than 40 mm
- ✓ 硬化滲透後的混凝土
Hardens penetrated concrete
- ✓ 抗白華
Anti-efflorescence
- ✓ 保護混凝土免受氯化物和空氣污染物影響老化
Protects concrete from deterioration by chlorides and airborne pollutants
- ✓ 保持混凝土特性
Retains the features of concrete
- ✓ 防止水、油污、油脂及酸或鹼性物質入侵
Inhibits ingress of water, oils, greases and light acids or alkali
- ✓ 簡單易用及環保
User and environmentally friendly
- ✓ 使用壽命長
Long life expectancy
- ✓ 成本效益高
High cost-effectiveness

應用 Applications

- ✓ 停車場 Car parks
- ✓ 儲水池 Tanks
- ✓ 天花 Ceilings
- ✓ 浴室/洗手間 Bathroom/Toilets
- ✓ 地板 Flooring
- ✓ 非標準應用 – 例如：瓷磚下面的裂縫、樑內的混凝土管道、擋土牆後的填充
Non-standard applications – e.g. Cracks underneath tiles, concrete pipes inside beams, retaining walls behind fills
- ✓ 游泳池 Swimming pools
- ✓ 天面 Roofs
- ✓ 地下室 Basements
- ✓ 混凝土養護 Concrete protection

石寶液

Brick Sealer Solution

高效能的石材永久保護劑

A Permanent and High-Performance Masonry Protector

石寶液可應用在大部分磚塊及石材上。使用溶劑後，空氣中的二氧化碳與其產生化學反應，一層能保護石材表面又不溶於水的樹脂於24小時內形成。溶劑可深入滲透至石材材質中，其滲透程度因應石材表面之孔隙率而定。

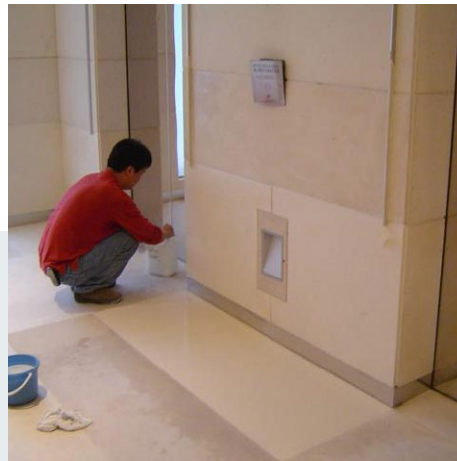
Brick Sealer Solution can be applied to most kinds of bricks and masonry. Once the solution applies, an insoluble resin will be formed by chemical reaction with the carbon dioxide in the air within 24 hours which protects the masonry surface. It can penetrate the masonry substrate to a certain extent, depend solely upon the surface porosity of the substrate.

渣打銀行香港裕民坊分行

Standard Chartered Bank, Yue Man Fong Branch, Hong Kong



施工前 Before application



施工後 After application



已處理表面 Treated surface

已處理及未處理的表面對比
Comparison of treated and untreated surface



已處理的表面效果 Effect of surface treatment

- ✓ 一次應用，永久保護
One-time application for permanent protection
- ✓ 不會改變石材材質之顏色、質感和物理屬性
Never alter the colour, texture and physical properties of masonry substrate
- ✓ 磚塊上：減少吸水性
On bricks: Reduce water absorbability
- ✓ 鋪路石上：減低凍融作用而增加其耐用性
On paving stone: Minimize the freeze-thaw effect to prolong the durability
- ✓ 天然石材上：吸收材質中的天然礦物以增強其耐候性
On natural masonry: Improve weatherability by absorbing natural mineral
- ✓ 瀝青屋頂表面：抗污漬及改善磚塊和瀝青之黏合性
On asphalt roofing surface: stain resistance and improve adhesive power between floor tiles and asphalt
- ✓ 防水、油、酸、鹼及紫外線
Water, oil, acid and alkali-proof and anti-UV
- ✓ 防止細菌、黴菌和真菌生長
Prevent the growth of bacteria, mold and fungi
- ✓ 高抗水及防滑效能
High water repellency ability and slip resistance

應用 Applications

- | | |
|------------------------------|------------------------------|
| ✓ 砂岩 Sandstone | ✓ 車庫 Garage pad |
| ✓ 水池 Pools | ✓ 花崗岩 Granite |
| ✓ 鋪路石/磚 Paving stones/bricks | ✓ 糧倉及庭院 Granaries and patios |
| ✓ 煤渣磚 Cinder block | ✓ 瀝青瓦 Asphalt shingles |
| ✓ 車道 Driveways | ✓ 大理石 Marble |

除油寶 Neutra Clean Solution

強力水性除油劑
A Water-based Heavy Duty Degreaser

“ 所有表面施工前
必須清洗乾淨，
以達至最佳效果
All surfaces must clean
thoroughly for the best
result

除油寶專為清除頑固油漬、塵垢污漬及白華而設，以透過化學反應將油脂乳化；主要去除深層滲透的油漬和污染表面的殘留物；亦可為鹽酸和其他酸性的環保替代品。整個清潔過程只需大約30分鐘已能達至顯著效果。

Neutra Clean Solution is designed to clean oils, dirt, efflorescence and grime, it emulsifies the grease by the chemical reaction. The primary use is to remove deeply penetrated oil stains and contaminated surface residue. It is also an environmental alternative to muriatic acid and other acids. The cleaning process only takes approximately 30 minutes with a significant result.



- ✓ 鹼性高可有效處理頑固油污
High alkalinity for tough soils and grease
- ✓ 使用後表面光潔無瑕
Surface become smooth and flawless after use
- ✓ 溫和、不刺激皮膚
Mild to skin
- ✓ 環保
Environmental friendly

應用 Applications

- ✓ 混凝土 Concrete
- ✓ 汽車維修場 Auto repair shops
- ✓ 石材 Masonry
- ✓ 瓷磚地板 Tile floors
- ✓ 加油站 Gas stations
- ✓ 任何需要清潔的地方 Any places where needed to be cleaned!
- ✓ 商用廚房 Commercial kitchens
- ✓ 食品服務機構 Food services agencies
- ✓ 車道 Driveways
- ✓ 停車場 Parking garages
- ✓ 家用 Household use

環保隔熱保溫塗料 Eco-Friendly Thermal Insulation Material

“ 施工後表面溫度
低於環境溫度
Surface temperature
always lower than
ambient temperature
after application

全球暖化的影響越來越受關注，隔熱、保溫及節能減碳的產品需求不斷增加，傳統PE聚乙烯、PU聚氨酯發泡均不適合施作於外露層及外牆面，無法有效抵抗水及濕氣的入侵，以致不能產生良好的隔熱保溫效果。

我們先進的環保隔熱保溫材料能達到對環境友善的低VOC排放，且良好的隔熱保溫效果有效。節省能源約30%–40%，省電約高達50%。我們用家友善的系統性施工是為您提供節能、減碳並且節省大量成本的最佳選擇！

The influence of global warming is a growing concern, the demand of heat insulation, heat preservation, energy saving, and carbon footprint reduction products are increasing rapidly. Traditional polyethylene (PE) and polyurethane (PU) foam boards are not suitable for the building exterior and external wall façade, as these materials cannot resist the penetration of water and moisture effectively, resulting as a poor thermal insulation layer.

Our space-age, environmentally friendly thermal insulation materials can achieve low VOC emissions and good thermal insulation efficacy. Energy saving ranges from 30%–40%, power saving could be as high as 50%. Our user-friendly installation systems provide you the best choice in energy saving, carbon-print reduction and ultimately great money saving!



水性抗污隔熱防水漆 **CGF7600A** Water-based Anti-fouling Waterproof Insulation Paint

複合型隔熱防水塗料
A Composite Type Waterproofing Insulation Coating

CGF7600A 是一種複合型隔熱防水塗料，擁有太陽能反射指數(SRI)值152，反射率極高。其優異的抗污性及耐候性，可用屋頂及外牆。此產品成膜緻密，適合用於鋼構及要求嚴格的金屬結構塗裝，加上擁有不燃燒及高反射率的特性，斷絕熱源不使其進入內部，減少室內冷氣、空調的使用，達成節能又省電的目的。

CGF7600A is a composite-resin, water-based heat insulation/waterproofing coating, it possesses a high value Solar Reflective Index (SRI) of 152 which is an outstanding reflectivity rate. The excellent anti-fouling and weather resistance performance which makes it perfectly suitable for roof and external wall. This product, after curing, has a dense film, which is highly suitable for steel structures and strict requirements of the metal coating, coupled with the characteristics of non-flammable. It also possesses a high reflective efficiency, stopping the solar heat source from conducting into the interior. This can reduce a huge demand on indoor air-conditioning to achieve an effective energy-saving and power savings.

香港基督科學教會
香港第一分會
First Church of Christ,
Scientist, Hong Kong



表面溫度(施工前) Surface
temp (Before application):
51.3°C
環境溫度 Ambient temp:
35.4°C



表面溫度(施工後) Surface
temp (After application):
36.1°C
環境溫度 Ambient temp:
39.5°C

台灣屏東潮州餐廳 (外部)
Exterior, Pingtung Chiu Chow
Restaurant, Kaohsiung,
Taiwan



表面溫度 (施工前)
Surface temp (Before application): 64.4°C

台灣屏東潮州餐廳 (內部)
Interior, Pingtung Chiu Chow
Restaurant, Kaohsiung,
Taiwan



表面溫度(施工前)
Surface temp (Before application): 57.6°C



表面溫度 (施工後)
Surface temp (After application): 37.3°C
環境溫度 Ambient temp: 40.5°C



表面溫度(施工後)
Surface temp (After application): 34.4°C
環境溫度 Ambient temp: 37.8°C

- ✓ 有優異的耐油性、耐水性 Anti-fouling and waterproofing
- ✓ 耐化學性質 Chemical resistance
- ✓ 低VOC排放 Low VOC emissions
- ✓ 耐候性 Weather resistance
- ✓ 隔熱性能極佳 Excellent heat insulation
- ✓ 不燃燒 Non-flammable

水泥系隔熱保溫塗料 **CG100TIC** Cementitious Based Thermal Insulation Coating For In/Outdoor Applications

水性保溫泥漿
Water-based Thermal Insulation Slurry

CG100TIC 是一種水性保溫泥漿，可使用於屋頂、內及外牆、冷藏庫地板、風管、熱水管、蒸氣管、儲槽及IT房等等，極優異的保溫特性，耐溫可達1000°C。此產品重量輕，具有優異的防水性，因此能夠產生連續性保溫、隔熱絕緣，產生真正的節省能源。

CG100TIC is a water-based, cementitious insulating slurry, which can be used on roof, internal and external wall, cold storage floor, ducting, hot water pipe, steam pipe, IT room, etc. It possesses excellent thermal insulation properties, heat resistance and can reach as high as 1000°C.

This product is light-weight and has excellent waterproofing performance. It can provide a thin, continuous and seamless insulation layer, resulting in real and high energy saving.

- ✓ 環保無異味
Eco-friendly with no odor
- ✓ 防水隔音
Waterproofing and sound insulation
- ✓ 抗紫外線
Anti-ultraviolet
- ✓ 重量輕
Light weight
- ✓ 優異附著力
Excellent adhesion
- ✓ 不燃燒
Non-flammable
- ✓ 不含VOC
VOC-free
- ✓ 耐候性佳
Excellent weatherability

香港碧荔道雅廬 (天面)
Rooftop, Nga Court, Bisney Road, Hong Kong



表面溫度(施工前)
Surface temp (Before application): 55°C



表面溫度(施工後)
Surface temp (After application): 29.7°C

台灣高雄壽民路屋頂
Rooftop, Shoumin Road, Kaohsiung, Taiwan



表面溫度(施工前)
Surface temp (Before application): 48.6°C

環境溫度 Ambient temp: 31.1°C



表面溫度(施工後)
Surface temp (After application): 33.0°C

環境溫度 Ambient temp: 34.0°C

香港碧荔道雅廬 (室內)
Interior, Nga Court, Bisney Road, Hong Kong



表面溫度(施工前)
Surface temp (Before application): 38.3°C



表面溫度(施工後)
Surface temp (After application): 27.4°C

香港沙田華生工業大廈冷藏庫
Cold Storage, Wah Sang Industrial Building, Sha Tin, Hong Kong



表面溫度(施工前)
Surface temp (Before application): 23.4°C



表面溫度(施工後)
Surface temp (After application): 29.7°C

水性無機保溫漆 ITP3100

Water-based Inorganic Insulation Paint

複合型保溫材料

A Composite Type Insulation Material

ITP3100 是一種複合型保溫材料，具有優異特性，可用於石油儲罐、輸油管、鍋爐蒸汽管道、機房、儲槽及空調保溫等等。此產品重量輕，具極低吸水率，形成優異的防水性，因此能夠產生連續性保溫、隔熱絕緣，耐溫可達500°C，達到節省能耗。

ITP3100 is a composite material type insulation coating. It has excellent thermal reduction property which is suitable to be used on oil storage tanks, oil pipelines, boiler steam pipes, engine room, meat cold rooms and air-conditioning insulation etc.

This product is of super light-weight, with low water absorption rate which allows it to act as an excellent waterproofer. It can also be troweled as a thin, continuous and seamless insulation layer, heat resistance can be reached as high as 500°C to achieve huge energy saving.

- ✓ 環保無異味
Eco-friendly with no odor
- ✓ 重量輕
Light-weight
- ✓ 可依溫度決定施工厚度
Application thickness depends on the desired temperature difference
- ✓ 防水
Waterproofing
- ✓ 不含VOC
VOC-free
- ✓ 維修容易
Easy maintenance
- ✓ 靈活性高
High flexibility

香港九龍木球會 – 扒房
Kowloon Cricket Club–Grill Room, Hong Kong



冷水管及風管 (施工前)
Chiller water pipe and air duct
Before application)



冷水管及風管 (施工後)
Chiller water pipe and air duct
(After application)



表面溫度(施工前)
Surface temp (Before application): 12.5°C



表面溫度(施工後)
Surface temp (After application): 28.9°C

水性高效能保溫塗料 EIC7670

Water-based High-Performance Insulation Paint

複合型保溫塗料

A Composite Type Insulation Coating

EIC7670 是一種複合型保溫塗料，可使用於-50°C–150°C 的儲油罐、供暖管道、船舶、巴士、組合屋、鐵皮屋、房屋內牆等保冷保熱。此產品也擁有隔音特性，可有效隔絕雨水的噪音；優異的隔熱保溫性能，隔絕熱量進入，並包覆室內溫度，不僅創造安靜適溫的良好生活環境，也達成節省能耗的目的。

EIC7670 is a composite-resin, water-based thermal insulation coating. It can be used in temperature zone ranging from -50°C – 150°C, such as storage tanks, heating pipes, ships, buses, modular houses, metal container houses and house internal walls for thermal insulation. This product also has sound insulation characteristics - can effectively reduce the noise of falling rain; the excellent thermal insulation performance - insulation of heat into the room and lowered metal façade cladding temperature. As a result, we can create a quiet and comfortable temperature living zone, but also achieve the purpose of energy saving.

- ✓ 具有優異的防水功能
Excellent water repellency
- ✓ 防腐
Anti-corrosion
- ✓ 重量輕
Light-weight
- ✓ 保溫隔熱效率高
High efficiency of thermal insulation
- ✓ 附著力強
Strong adhesion
- ✓ 可明顯降低冷或熱量的流失
Significantly reduce cold or heat loss



高透光節能膜 IMT70

High Transmittance Energy Saving Films

建築物的價值來自採光，IMT70具有高透光屬性，透光率可達到70%以上，且運用納米及航太科技，使此產品紫外線阻隔率提高至99%以上，紅外線阻隔率達到90%–95%，有效降低室內燈光使用率，且隔熱效果可減少空調壓縮機運轉，節省能耗約20%–30%。

The value of building comes from collection of daylighting, it gives us warm and good visibility. This product has the highest light transmittance property - can reach more than 75%. By using nano and aerospace technology, the UV blocking rate increased to more than 99% and the infra-red blocking rate reached as 90%–95%, which implies it can effectively reduce indoor lighting usage hours, and heat insulation effect can reduce air-conditioning compressor operation, saving energy about 20%–30%.

- ✓ 紅外線及紫外線阻隔率高
High infrared and ultraviolet ray blocking rate
- ✓ 有效隔熱
Effective heat insulation
- ✓ 透光率高
High transmittance rate
- ✓ 有效節能
Effective energy saving

台灣高雄左營住宅 (一)
A residence, Kaohsiung,
Taiwan (1)



施工前 Before application



IR值(施工前) IR Value (Before application): 199
環境溫度 Ambient temp: 35.0°C



施工後 After application



IR值(施工後) IR Value (After application): 8
環境溫度 Ambient temp: 28.1°C

台灣高雄左營住宅 (二)
A residence, Kaohsiung,
Taiwan (2)



施工前 Before application



IR值(施工前) IR Value (Before application): 226
環境溫度 Ambient temp: 35.0°C



施工後 After application



IR值(施工後) IR Value (After application): 1
環境溫度 Ambient temp: 30.0°C

工程參考
Job Reference

	卓先液 TS	石寶液 BS	除油寶 NC	CG100TIC	CG7600A	ITP3100
香港基督科學教會香港第一分會 First Church of Christ, Scientist, Hong Kong	✓		✓	✓	✓	
香港鄉村俱樂部 - 主廚房及冷庫 The Hong Kong Country Club - Main Kitchen and Cold Storage, Hong Kong	✓		✓	✓		
香港屯門極樂寺 Gig Lok Monastery, Tuen Mun, Hong Kong	✓	✓	✓			
百佳超級市場海鮮區地台及冷庫 - 香港超過100間分店 PARKnSHOP Seafood Counter Floor Slab and Cold Storage - Over 100 outlet in Hong Kong	✓		✓	✓		
香港葵涌祖堯天主教小學 - 魚池 Fish Pond in Cho Yiu Catholic Primary School, Kwai Chung, Hong Kong	✓		✓	✓		
香港中環美利大廈 The Murray House, Central, Hong Kong	✓					
香港香港仔東勝道5及7號 5 & 7 Tung Sing Road, Aberdeen, Hong Kong	✓		✓	✓		
香港葵涌金龍工業中心 Golden Dragon Industrial Center, Kwai Chung, Hong Kong	✓		✓	✓		
香港萬宜大廈地庫停車場 Basement Parking Lot, Man Yee Building, Hong Kong	✓		✓			
香港黃竹坑盛德工業大廈受禧堂 Min Xi Tang, Sing Teck Factory Building, Wong Chuk Hang, Hong Kong	✓		✓	✓		
香港葵涌屈臣氏酒窖 Watson's Wine Cellar, Kwai Chung, Hong Kong			✓	✓		
香港九龍木球會 - 扒房 Kowloon Cricket Club - Grill Room, Hong Kong	✓		✓			✓
香港樂林蒙特梭利學校(半山區) Woodland Mid-Levels Montessori Pre-School, Hong Kong	✓		✓			

	卓先液 TS	石實液 BS	除油實 NC	CG100TIC	CG7600A	ITP3100
香港樂林國際學校(薄扶林) Woodland Pokfulam Pre-School, Hong Kong	✓		✓			
渣打銀行香港裕民坊分行 Standard Chartered Bank, Yue Man Fong Branch, Hong Kong	✓	✓	✓			
渣打銀行香港太安樓分行 Standard Chartered Bank, Tai On Building Branch, Hong Kong	✓		✓			
渣打銀行香港軒尼詩道分行 Standard Chartered Bank, Hennessy Road Branch, Hong Kong	✓					
渣打銀行香港尖沙咀分行地庫 Standard Chartered Bank, Tsim Sha Tsui Branch Basement, Hong Kong	✓					
匯豐銀行香港堪富利士道分行 HSBC, Humphreys Road Branch, Hong Kong	✓					
中國建設銀行香港長沙灣分行 China Construction Bank, Cheung Sha Wan Branch, Hong Kong	✓					
創興銀行香港中環分行 Chong Hing Bank, Central Branch, Hong Kong	✓					
華僑永亨銀行香港佐敦BCP基地 OCBC Wing Hang Bank BCP Site, Jordan, Hong Kong	✓					
華僑永亨銀行香港總行 OCBC Wing Hang Bank, Main Branch, Hong Kong	✓					
華僑永亨銀行香港觀塘分行 OCBC Wing Hang Bank, Kwun Tong Branch, Hong Kong	✓					
工商銀行香港中環皇后大道中分行 – 地庫 ICBC Tower – Basement, Queen's Road Central Branch, Hong Kong	✓		✓			
香港藍田龍柏閣 Loong Pak Building, Lam Tin, Hong Kong	✓		✓			
香港半山第一大廈停車位 First Mansion Carport, Mid-Levels, Hong Kong	✓		✓			

	卓先液 TS	石實液 BS	除油實 NC	CG100TIC	CG7600A	ITP3100
香港薄扶林貝沙灣 Residence Bel-Air, Pok Fu Lam, Hong Kong	✓		✓	✓		
香港碧荔道37-39號 37-39 Bisney Road, Hong Kong	✓		✓		✓	
香港薄扶林趙苑 Villa Cecil, Pokfulam, Hong Kong	✓					
澳門西望洋花園 Jardim De Penha, Macau	✓		✓			
中國上海波特曼麗嘉酒店 – 活力池 Vitality Pool in Portman Ritz-Carlton Shanghai, China	✓	✓	✓			
中國瀋陽百利保酒店 Paliburg Hotel, Shenyang, China	✓		✓			
渣打銀行中國上海浦東數據中心 Standard Chartered Bank, Data Centre, Shanghai Pudong, China	✓		✓	✓		
渣打銀行中國杭州分行 Standard Chartered Bank, Hangzhou Branch, China	✓					
渣打銀行中國南昌分行 Standard Chartered Bank, Nan Cheong Branch, China	✓					
渣打銀行台灣5間分行 Standard Chartered Bank, 5 Branches, Taiwan	✓		✓			
台灣屏東林邊貨櫃屋 Container House, Linbian, Pingtung, Taiwan			✓		✓	
台灣台中市文心南路德客傢俬 DECO BALI, South District, Taichung City, Taiwan	✓		✓			
台灣桃園新屋鄉民代表會 Xinwu District Township Representative Council, Taoyuan, Taiwan	✓		✓	✓		
台灣高雄市茄萣國中 Chiehting Junior High School, Kaohsiung, Taiwan	✓		✓		✓	
台灣高雄市左營區 - 住宅天花 Residential Building Ceiling, Zuoying District, Kaohsiung, Taiwan	✓					
台灣屏東里港 - 住宅 Residential Building, Ligang, Pingtung, Taiwan	✓		✓			

如欲尋求最佳的滲漏/保溫隔熱解決方法，歡迎聯絡查詢

If you are looking for the best solution for water seepage or thermal insulation,
please feel free to contact us

荃灣德士古道168號
德豐工業中心1期5樓05室
Unit 05, 5/F, Tower 1,
Tak Fung Industrial Centre,
168 Texaco Road,
Tsuen Wan, N.T.
6238 4970

tru-seal@outlook.com
tru-seal.com.hk

ocean.free@outlook.com
oceanfree.com.hk



Tru-Seal International (HK) Limited
卓先國際(香港)有限公司



瀚一

Ocean Free Limited